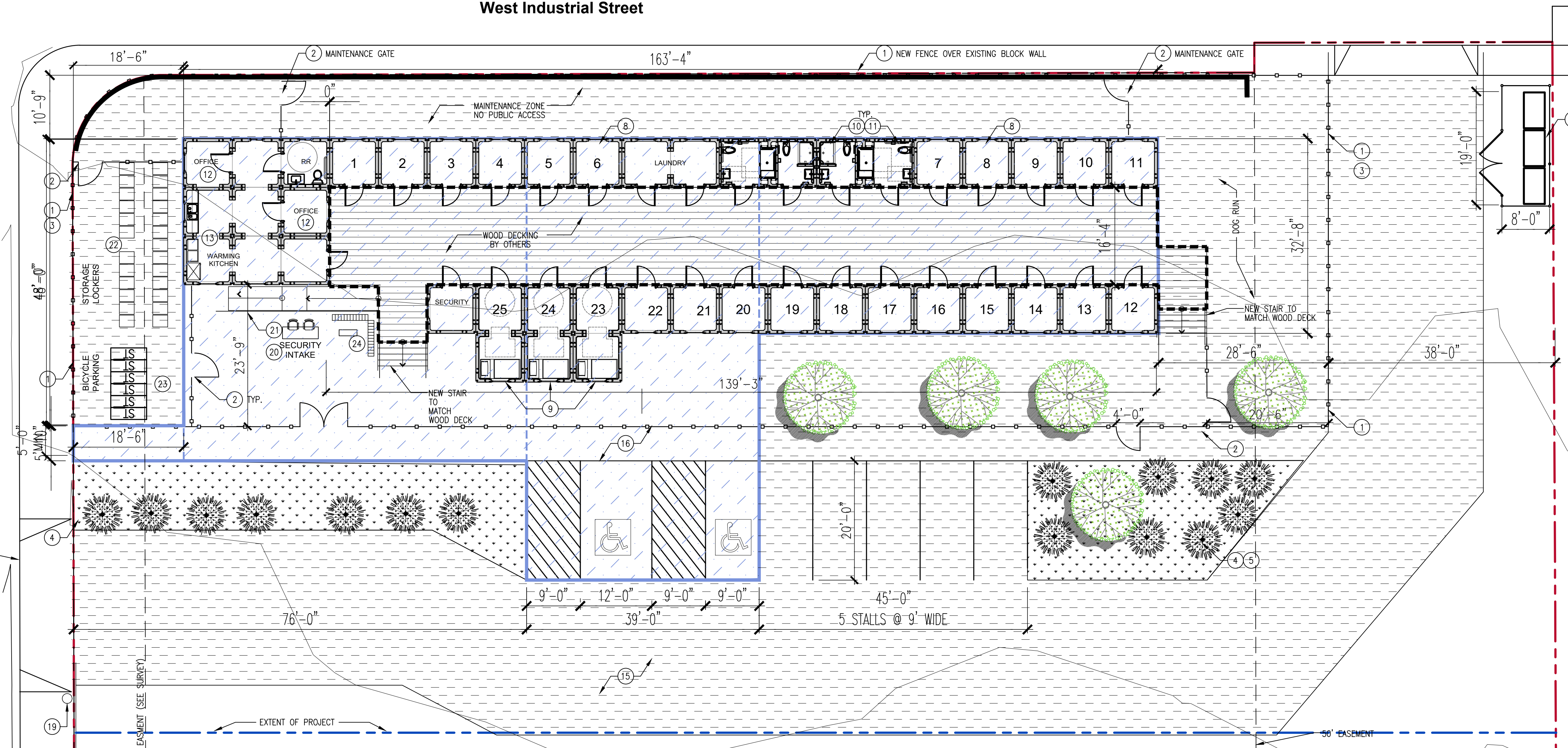


West Industrial Street

North Miller Avenue

EXISTING DRIVEWAY



SITE PLAN 1  
3/32" = 1'-0"

SITE PLAN KEYNOTES

- 1 (N) CHAIN LINK FENCING
- 2 (N) FENCE GATE
- 3 NOT USED
- 4 (N) PLANTING (BOXED)
- 5 (N) SHADE TREE (BOXED)
- 6 (N) HOSE BIB
- 7 (N) BENCHES NIC
- 8 (N) SINGLE UNIT- BY LIFEARC
- 9 (N) ADA UNIT- BY LIFEARC
- 10 (N) ADA BATHROOM UNIT- BY LIFEARC
- 11 (N) ADA SHOWER UNIT- BY LIFEARC
- 12 (N) OFFICE UNIT BY LIFEARC
- 13 (N) KITCHENETTE
- 14 (N) TRASH BIN AREA (3) BINS, ENCLOSURE CONSTRUCTION T.B.D.
- 15 (N) UNPAVED or DECOMPOSED GRANITE T.B.D.
- 16 (E) ELECTRICAL POLE
- 19 (E) ELECTRICAL POLE
- 20 (N) SAFETY STATION (SECURITY)
- 21 (N) PRE-FAB ADA RAMP, SIZE: T.B.D.
- 22 (N) STORAGE LOCKERS SIZE: T.B.D.
- 23 (N) BICYCLE PARKING
- 24 (N) AMNESTY LOCKERS SIZE: T.B.D.

SITE PLAN LEGEND

- (N) ASPHALT PAVING, 9,289 SF
- (N) UNPAVED
- (N) UNPAVED- DESIGNATED LANDSCAPE
- (N) CHAIN LINK
- (N) POTTED LANDSCAPE
- (N) POTTED SHADE TREE

DRAWINGS ISSUED

DATE	DESCRIPTION	DATE
11-13-2023	POST TO ENGINEERING	11-13-2023
11-13-2023	POST TO FIRE DEPT	11-13-2023
11-29-2023	UPDATED COUNCIL COMMENTS	11-29-2023



Scale: TRUE NORTH  
1/16" = 1'-0"  
Created by:  
JH  
Drawn by:  
HC  
Project #: 23006.01

Drawing Title & Number:

PAVING DETAIL  
**A-0.2**

